



In This Issue:

BERARD
SINCE
1945
The Mega Transport Experts

- > The Shipyard | Moving Douglas B. Mackie
- > On The Road! | The 108' Vessel Transport
- > Team Member Spotlight | Justin Thibodeaux

The Shipyard Moving Douglas B. Mackie



Job Specs

Weight: 3,400 Tons

Dimensions:

160'L x 52'W x 97'H

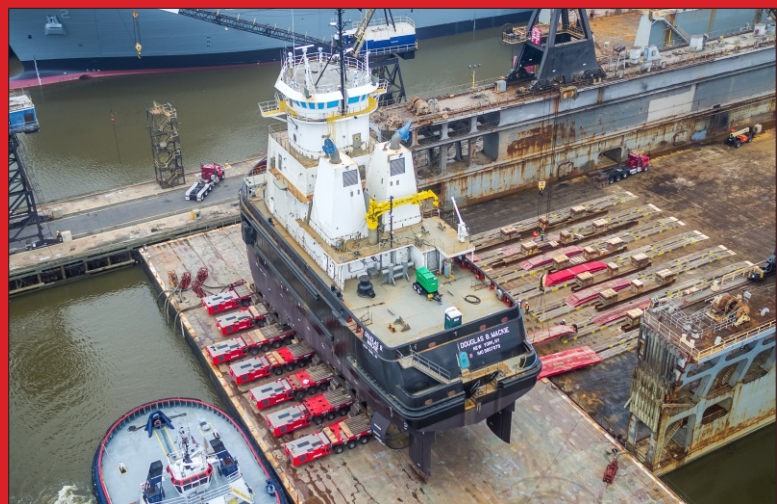
Equipment Used:

98 axle lines of
SPMTs, 168 crane
mats, high volume
water pumps and
loading ramps

When the Douglas B. Mackie was completed, the Berard Team went to work on getting it launched. The team overcame a major hurdle to get the 3,400 ton vessel loaded out. Due to barge height constraints, Berard developed a ramping plan that allowed the project to go as planned and meet the customer's scheduled deadline. The plan consisted of bringing the vessel up to barge height by placing 168 crane mats and climbing the massive vessel onto them. The mats were first laid out in the fabrication yard and the vessel moved onto them. Once on the first set of mats, the team double stacked more mats near the bulkhead to reach the proper height. The load could then make the transfer from dock to barge. The Douglas B. Mackie was then transported to Mobile, Alabama where it was transferred from the barge to dry dock for launching. Way to go, team!







On The Road The 108' Vessel Transport



Job Specs

Weight: 190,000 lb.

Dimensions:

108' L x 17'-2" H

Equipment Used:

13 Axle Steerable Dolly System & Prime Mover

This 190,000 lb., 108' long vessel is not exactly designed for highway travel, but when it needed to be shipped from a fabricator in Mississippi to a plant near Baton Rouge, LA, Berard went to work developing a fail-safe delivery plan. A 13 axle steerable dolly system was proposed to transport the cargo, allowing for full steering capability while keeping the gross weight as light as possible. The route, included numerous bridge crossings, tight turns, low utility lines, low trees, and an inclined railroad crossing. After surveying the route, Berard determined the move was in fact feasible, including navigating a congested refinery destination. In a mere 6 hours, the journey was completed safely.



Justin Thibodeaux

Safety Manager



In Sept of 2014, Justin Thibodeaux became Berard's Safety Manager. Justin has a history of helping keep people safe in the workplace. He started his career as a medic with Acadian Ambulance before an opportunity to get into safety for an oil and gas company came about in 2007. Justin has over 10 years of experience within the Health, Safety, and Environmental field. He also recently obtained a Certificate for Occupational Safety Managers.

Justin says "I enjoy the challenge of adapting to working with different people and working in different environments. At Berard, I enjoy coaching employees on regulatory compliance issues as well as building and sustaining a positive culture throughout the Berard team."

He has been married to his wife Marsha for six years and has 2 children, Logan (5) and Adley (4).



Happy Birthday!

From The Berard Team

Happy Birthday to These Dedicated Team Members!

Andrea Armenakis
Kevin Bienvenu
Raywood Breaux
Klinton Burkett
Spencer Freyou

Dustin Ronsonet
Caleb Segura
Sloane Simoneaux
Joel Thibodeaux
Vicki Pellerin